



Thank you for purchasing the ATS Borescope. Please follow these instructions to install the ATS Borescope software:

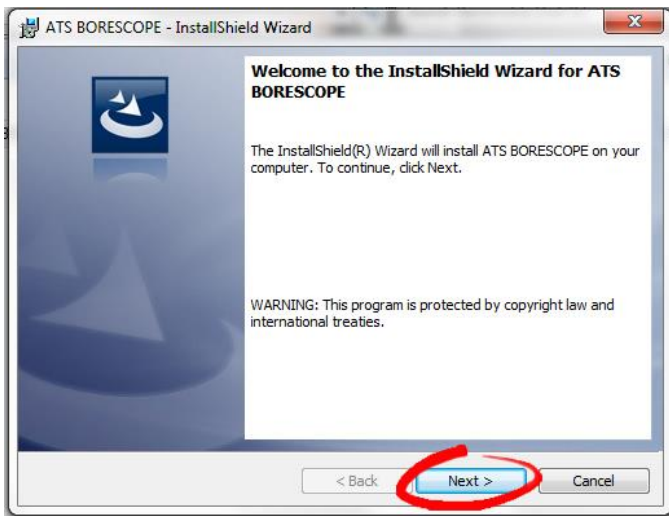
### REGISTRATION:

In order to receive technical support you **MUST** register your products. Your information will be kept on file and referenced before any support is administered. You may register on-line by going to:

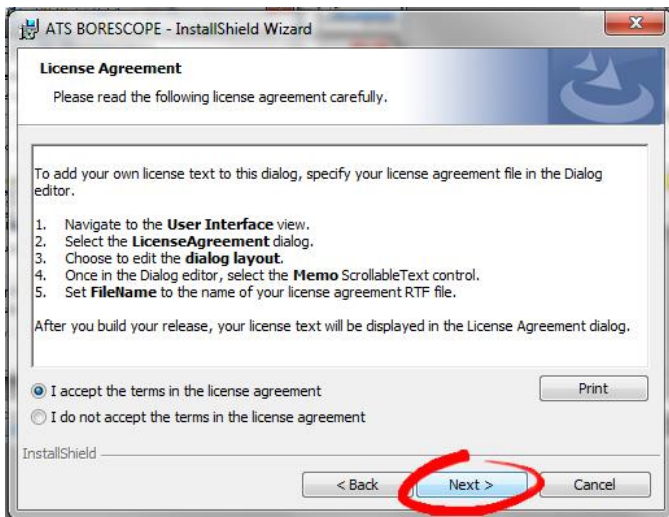
<http://www.atsnm.com/registration.htm>. Your information is kept confidential and will not be shared.

### INSTALL ATS BORESCOPE SOFTWARE:

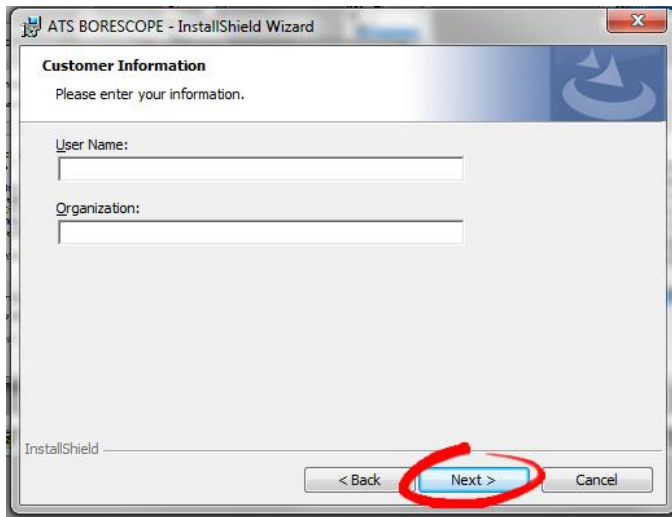
1. Insert the ATS Borescope software thumb drive in a USB port.
2. The software should autoplay. If not search for it in your explorer window.
3. Locate and run the ATSBORESCOPE\_205\_Setup.exe file.
4. Click **Next** in the ATS Borescope Install Wizard window.



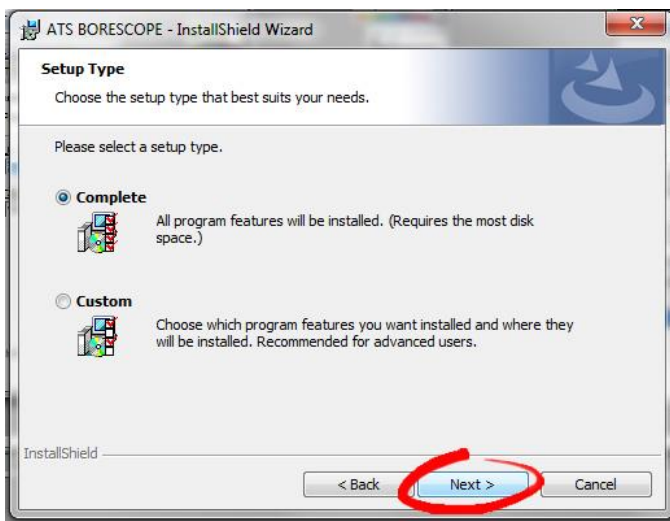
5. In the license agreement window accept the terms of the agreement and click **Next** to move on.



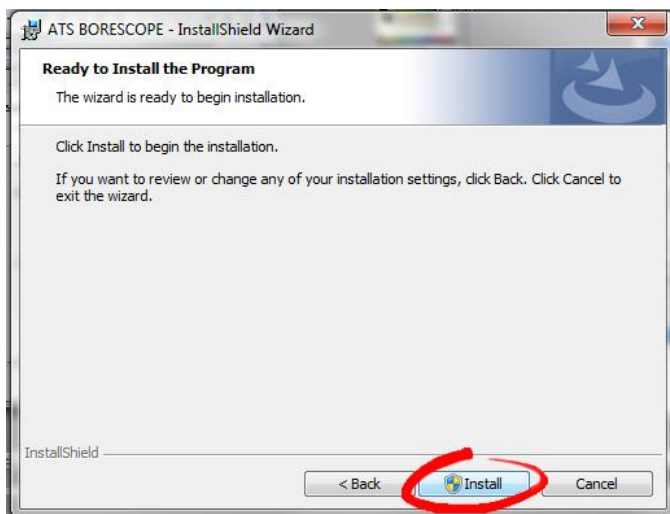
6. The customer information window will appear next.  
Enter a user name and organization name then click **Next**.



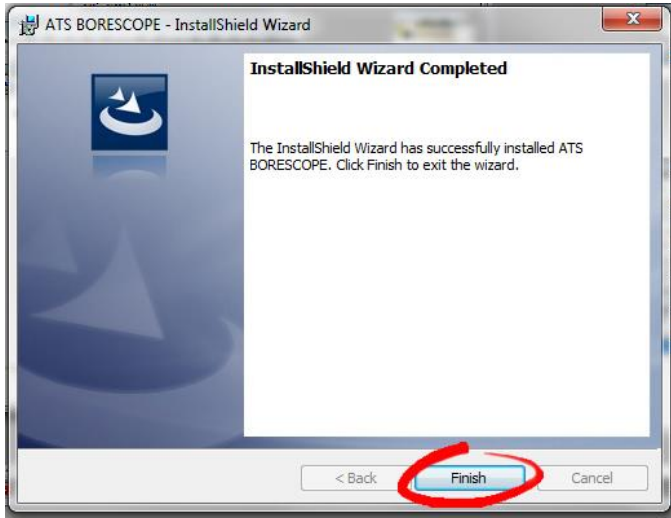
7. In the setup window choose the setup that best suits your needs and click **Next**.



8. In the next window select **Install** to complete the installation.



9. The last window confirms your installation. Click **Finish**.



**SOFTWARE UPDATES:**

Keep your ATS Borescope up to date!

Go to <http://www.atnm.com/downloads.htm> for the latest updates.

I would like to personally thank you for choosing ATS. At ATS we stand behind our products and we are proud of the service we give to our customers. If you have any questions concerning the use of your ATS Borescope, please call us at 800-572-6112.

Sincerely,



Bernie Thompson  
President  
Automotive Test Solutions, Inc.